

SPR™

SPIRAL WOUND
PIPE LINER

Structural liner for circular and non-circular gravity pipelines between 800 mm to 5500+ mm

800 MM - 5500 MM • ROUND/NON-ROUND • FULLY STRUCTURAL



SEKISUI

Spiral Wound Technology Overview



Gravity
Pipe Renewal

Live Flow
Installations

Zero
Chemicals

Spiral Wound pipe liners are a structural rehabilitation solution for gravity pipe applications from 150 mm - 5500 mm. Utilizing machinery, a continuous strip of PVC is constructed as a uniform liner. Spiral Wound lining is 100% trenchless; only existing access points are used for rehabilitation.



SEWER



STORM DRAIN



CULVERT

Spiral Wound

Lining Methods

SPR™EX

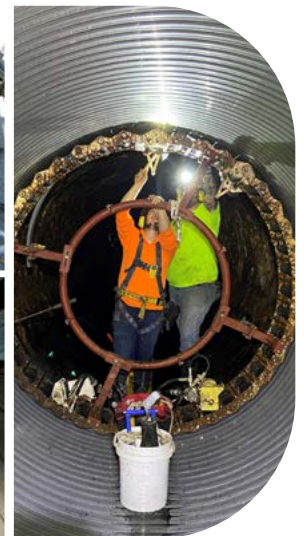
150 mm - 1050 mm
No Grout

SPR™ST

600 mm - 3000 mm
Steel-Reinforced

SPR™

800 mm - 5500 mm
Round/Non-Round





SPR™

Technology Overview

800 mm - 5500 mm
Diameters

Round/Non-Round
Shapes

Fully
Structural

SPR™ is a Spiral Wound pipe lining method for large diameter sewers, storm drains and culverts. SPR™ lines both round and non-round shapes, providing fully structural rehabilitation. The machine travels the length of the pipeline while constructing the liner at a fixed diameter.

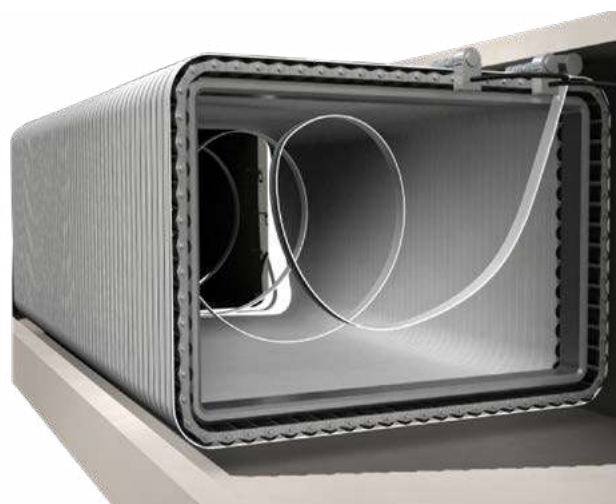
SPR™ is an entirely mechanical process that does not require curing or chemicals.



Installation

A steel-reinforced PVC profile strip is wound into the pipe by a traverse winding machine. The machine travels the length of the pipeline while constructing the liner at a fixed diameter. Grout is then introduced to fill the annular space; either part of the structural liner or just as a gap filler to uniformly transfer loads onto the liner. Grout type depends upon dimensions of the pipe and overall project conditions.

Process



SEKISUI



www.sekisui-spr.com
sekisui.info@sekisui-spr.com

FOLLOW OUR CHANNELS FOR THE LATEST ON
SPIRAL WOUND PIPE LINING

