

# SPR<sup>TM</sup>ST

**SPIRAL WOUND  
PIPE LINER**

Reinforced PVC Liner for Gravity Pipelines from 600 mm to 3000 mm

**600 MM - 3000 MM • STEEL-REINFORCED • FULLY STRUCTURAL**



**SEKISUI**

1-866-627-7772

[www.sekisui-spr.com](http://www.sekisui-spr.com)

[sekisui.info@sekisui-spr.com](mailto:sekisui.info@sekisui-spr.com)

# Spiral Wound

## Technology Overview

**Gravity**  
Pipe Renewal

**Live Flow**  
Installations

**Zero**  
Chemicals

Spiral Wound pipe liners are a structural rehabilitation solution for gravity pipe applications from 150 mm - 5500 mm. Utilizing machinery, a continuous strip of PVC is constructed as a uniform liner. Spiral Wound lining is 100% trenchless; only existing access points are used for rehabilitation.



SEWER



STORM DRAIN



CULVERT

## Spiral Wound

## Lining Methods

SPR<sup>TM</sup>EX

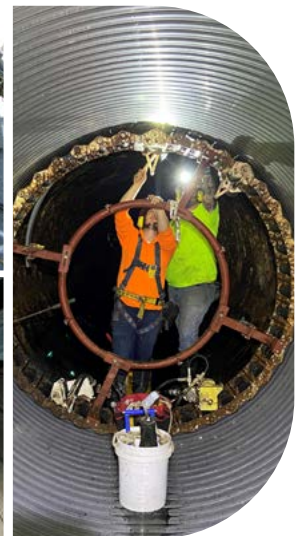
150 mm - 1050 mm  
No Grout

SPR<sup>TM</sup>ST

600 mm - 3000 mm  
Steel-Reinforced

SPR<sup>TM</sup>

800 mm - 5500 mm  
Round/Non-Round





# SPR™ST

## Technology Overview

**600 mm - 3000 mm**  
Diameters

**Steel-Reinforced**  
PVC

**Fully**  
Structural

SPR™ST is a Spiral Wound pipe lining method for sewers, storm drains and culverts between 600 mm and 3000 mm. Where required for greater stiffness, the liner can be reinforced by simultaneously winding a profiled strip of steel under the tees of the PVC profile.

**SPR™ST is an entirely mechanical process that does not require curing or chemicals.**



## Installation

The PVC profile and steel is fed into the machine from above ground spools. The winding machine then winds the PVC profile to form a liner. The process continues until the liner wound by the SPR™ST winding machine reaches the end of the pipeline length to be rehabilitated. The annulus between the fixed diameter liner and the host pipe is filled with cementitious grout immediately after winding is completed.

## Process



# SEKISUI



[www.sekisui-spr.com](http://www.sekisui-spr.com)  
[sekisui.info@sekisui-spr.com](mailto:sekisui.info@sekisui-spr.com)

FOLLOW OUR CHANNELS FOR THE LATEST ON  
SPIRAL WOUND PIPE LINING

