

SPR™PE

**SPIRAL WOUND
PIPE LINER**

Structural HDPE Liner for Gravity Pipelines from 900 mm to 3000 mm

900 MM - 3000 MM • STEEL-REINFORCED • FULLY STRUCTURAL



SEKISUI

Spiral Wound

Technology Overview



Gravity
Pipe Renewal

Live Flow
Installations

Zero
Chemicals

Spiral Wound pipe liners are a structural rehabilitation solution for gravity pipe applications from 150 mm - 5500 mm. Utilizing machinery, a continuous strip of PVC/HDPE is constructed as a uniform liner. Spiral Wound lining is 100% trenchless; only existing access points are used for rehabilitation.



SEWER



STORM DRAIN



CULVERT

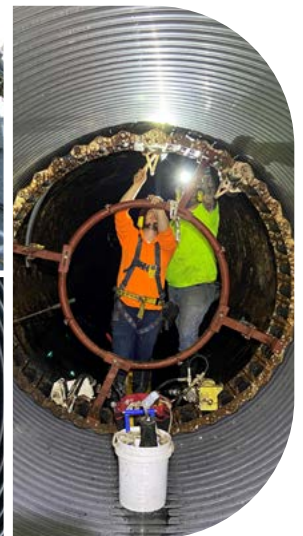
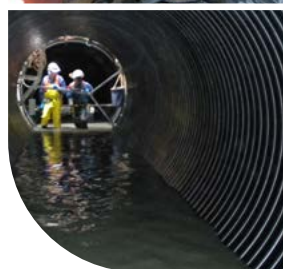
Spiral Wound

Lining Methods

SPR™EX
150 mm - 1050 mm
No Grout

SPR™PE
900 mm - 3000 mm
Steel-Reinforced

SPR™
800 mm - 5500 mm
Round/Non-Round



SPR™PE

Technology Overview

900 mm - 3000 mm
Diameters

Steel-Reinforced
HDPE

Fully
Structural

SPR™PE is a Spiral Wound pipe lining method for sewers, storm drains and culverts between 900 mm and 3000 mm. The fully encapsulated steel reinforcement within the HDPE liner is designed to provide a liner of optimum stiffness for the application.

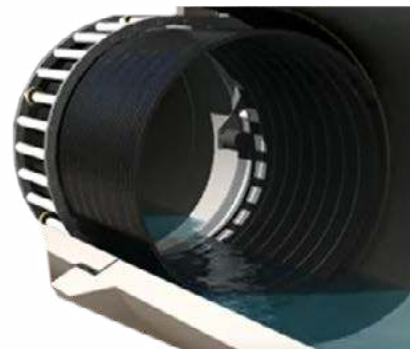
SPR™PE is an entirely mechanical process that does not require curing or chemicals.



Installation

The profile (which comes in a variety of sizes) is reinforced with steel that is completely encapsulated within the HDPE material. For installations, the reinforced HDPE is fed from an above ground spool into a winding machine at the host pipe entrance. The machine winds to construct and push the liner the length of the pipeline. The annular space is subsequently grouted.

Process



SEKISUI



www.sekisui-spr.com
sekisui.info@sekisui-spr.com

FOLLOW OUR CHANNELS FOR THE LATEST ON
SPIRAL WOUND PIPE LINING

