

SPR™EX

**SPIRAL WOUND
PIPE LINER**

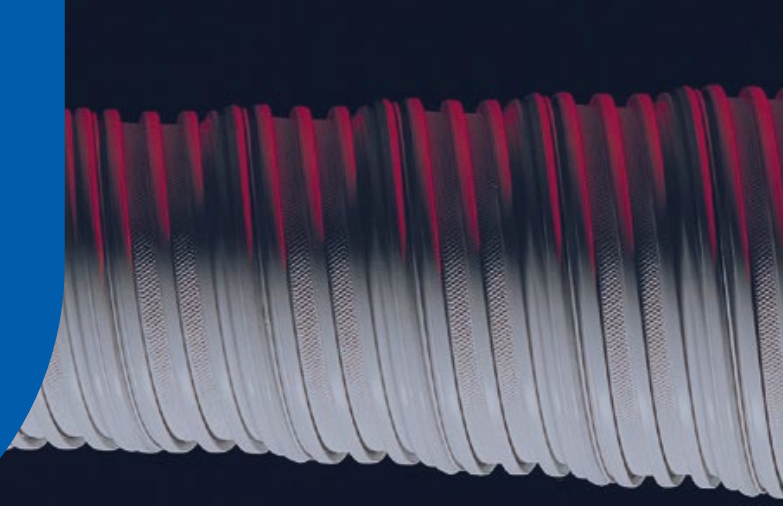
Structural, Light Weight, Close Fit Liner for Gravity Pipelines from 150 mm - 1050 mm

150 MM - 1050 MM • CLOSE FIT LINING • FULLY STRUCTURAL



SEKISUI

Spiral Wound Technology Overview



Gravity
Pipe Renewal

Live Flow
Installations

Zero
Chemicals

Spiral Wound pipe liners are a structural rehabilitation solution for gravity pipe applications from 150 mm - 5500 mm. Utilizing machinery, a continuous strip of PVC is constructed as a uniform liner. Spiral Wound lining is 100% trenchless; only existing access points are used for rehabilitation.



SEWER



STORM DRAIN



CULVERT

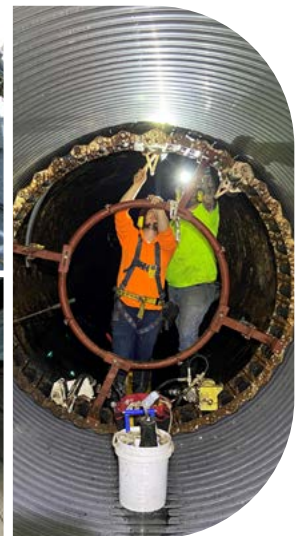
Spiral Wound

Lining Methods

SPR™EX
150 mm - 1050 mm
No Grout

SPR™ST
600 mm - 3000 mm
Steel-Reinforced

SPR™
800 mm - 5500 mm
Round/Non-Round



SPR™EX

Technology Overview

150 mm - 1050 mm
Diameters

Close Fit
Lining

Fully
Structural

SPR™EX is a tight fit lining solution that does not require annular space grouting. SPR™EX is initially wound at a fixed diameter smaller than the host pipe. This is done so that the liner can negotiate offsets and other host pipe defects without restriction.

SPR™EX is an entirely mechanical process that does not require curing or chemicals.

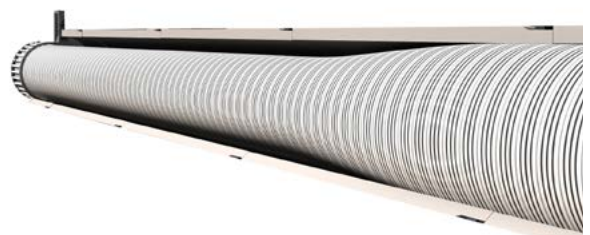


Expansion

Once the SPR™EX liner reaches the upstream manhole, the liner is torsionally restrained. Once secured, the operator will then expand the liner. The expansion process begins when the wire positioned between the primary and secondary (or sacrificial lock) is retracted, severing the secondary lock. This allows for successive wraps of PVC profile to expand, creating a customized tight fit liner against the inside of the host pipe.

Process

PRIMARY LOCK SECONDARY LOCK



SEKISUI



www.sekisui-spr.com
sekisui.info@sekisui-spr.com

FOLLOW OUR CHANNELS FOR THE LATEST ON
SPIRAL WOUND PIPE LINING

